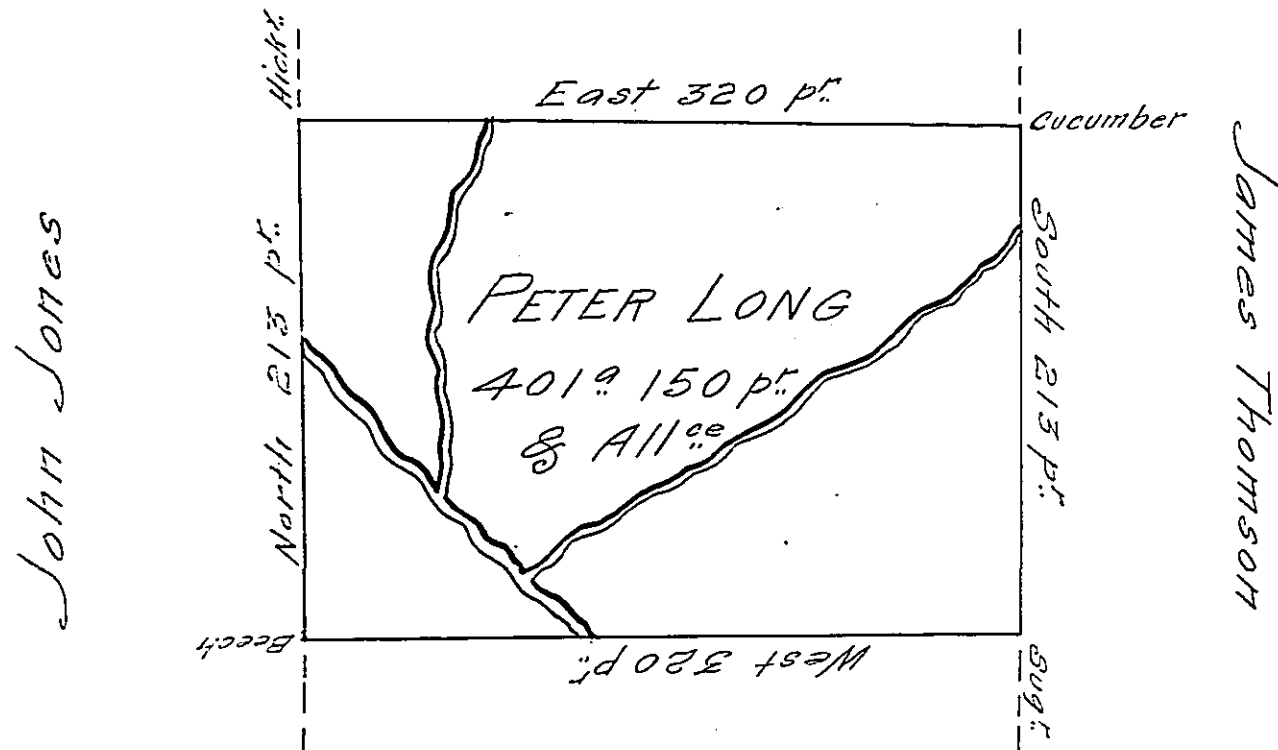


James Patton



John Long

Situate on the West side of French Creek in Allegheny County Containing 401 Acres and 150 p^t. and allowance of Six $\frac{1}{2}$ Cent for Roads &^o. Surveyed the 8th day of October 1794 In pursuance of his Improvement bearing date the 7th day of October 1794.

W^m Power D^x. Sr.

To Daniel Brodhead Esq^r.
Surveyor General }

IN TESTIMONY that the above is a copy of the original remaining on file in the Department of Internal Affairs of Pennsylvania, made conformably to an Act of Assembly approved the 16th day of February, 1833, I have hereunto set my Hand and caused the Seal of said Department to be affixed at Harrisburg, this twenty-seventh day of September 1906

Wm. Power
Secretary of Internal Affairs.